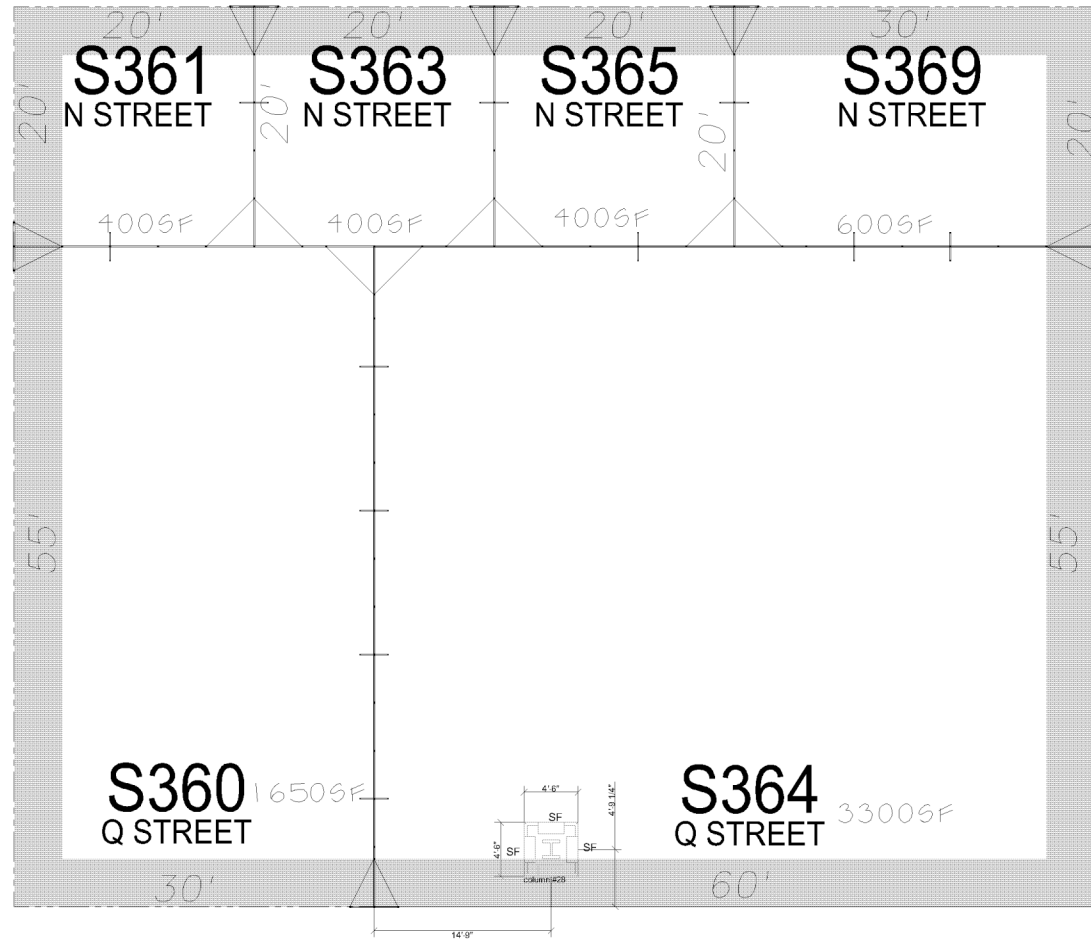
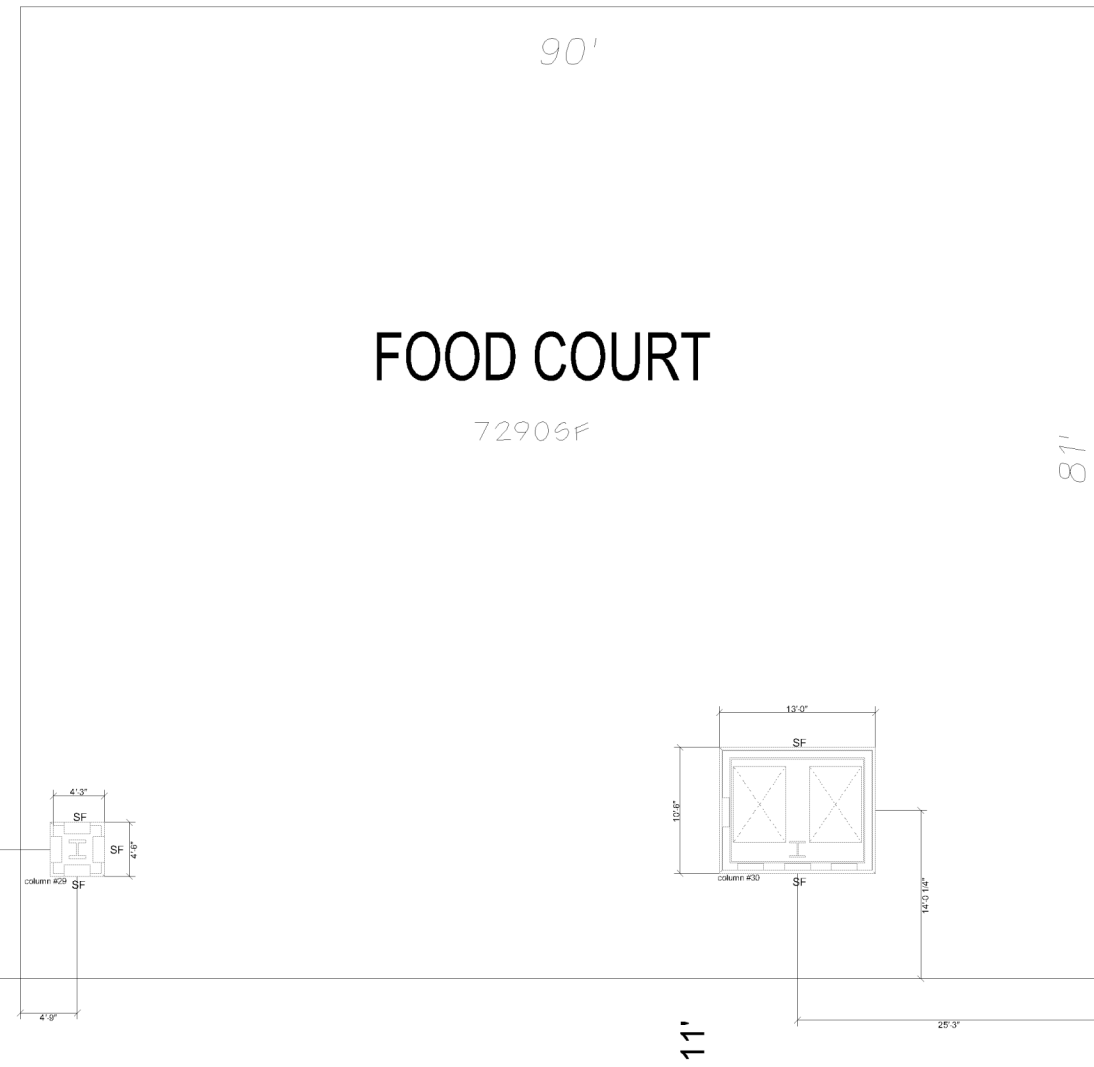


N STREET

11'



THIRTY-SEVENTH AVENUE

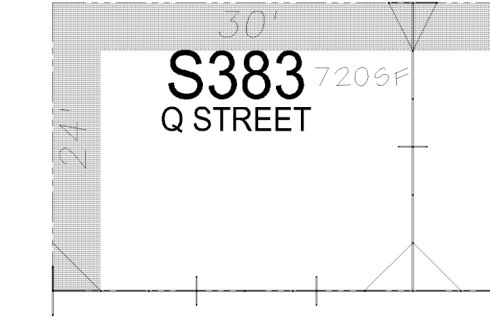
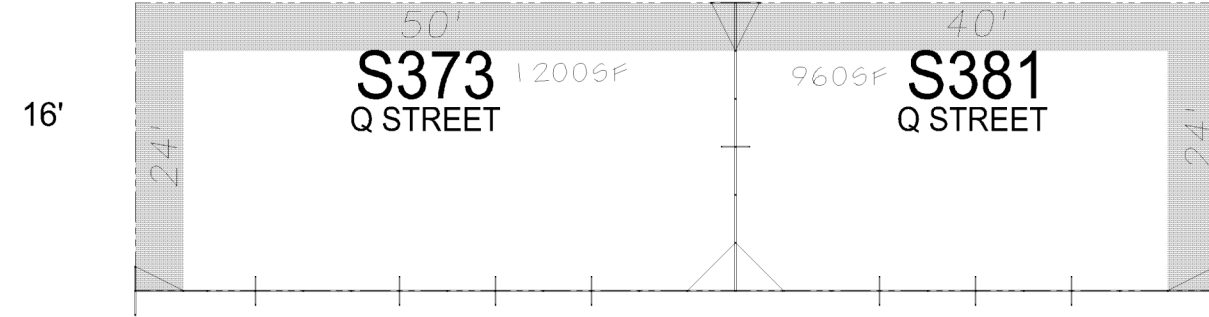
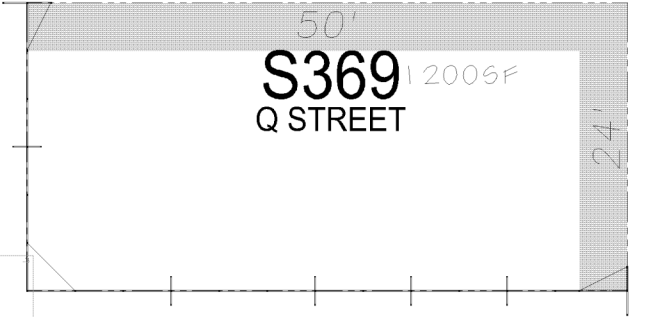


THIRTY-EIGHTH AVENUE



Q STREET

17'



S218

S216

S215

S214

S213

S212

S211



* These are working plans and are subject to frequent changes.
 * To see a photo of each side of any column and it's utilities click on the corresponding arrows.

ICSC RECon 2009 LEASING MALL

- For all Area Drawings, Design Criteria, Rules & Regulations and Floor Plans, plus an e-mail link for additional questions see <http://www.icsc.org>. All drawing files are in PDF format.
- Due to structural requirements support walls cannot be removed without prior approval from GES and DDG.
- Access to all fire hose cabinets (FHC) and fire extinguishers (FX) must be maintained at all times.

DATE: 02/27/09
 SCALE: 1/16"=1'-0"

AREA DRAWING
64